

LIVE AUCTION

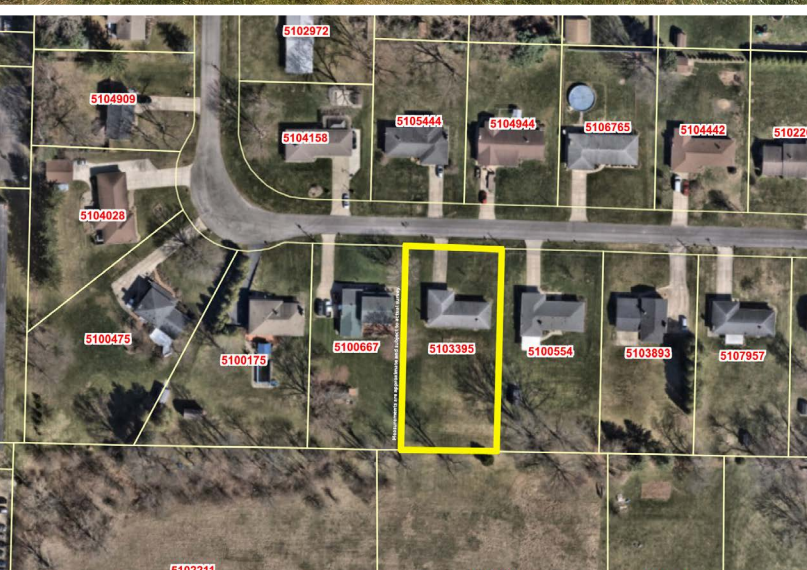
THURSDAY, SEPTEMBER 25, 2025, 12:00 PM



REAL ESTATE



LIVE AUCTION WITH ONLINE BIDDING



Spacious brick ranch built in 1965 w/ 1,548 sq. ft. of living on .61-acre lot. Main level features open concept kitchen & family room, large living room, dining room, 3 nice sized bedrooms, full bath & half bath. Hardwood flooring throughout much of the main level. Full basement w/ laundry, gas F/A furnace, central A/C & breaker electric. Basement has been waterproofed. Attached two-car garage. Well & sewer. Parcel #5103395. Half year taxes are \$1,969.74. Convenient location with easy access to shopping, restaurants, and highway. Perfect for investors, contractors, or homeowners looking for a renovation project. This home has been partially renovated and is ready for your finishing touches to make it your own!

Terms On Real Estate: 10% down auction day, balance due at closing. A 10% buyer's premium will be added to the highest bid to establish the purchase price. Any desired inspections must be made prior to bidding. All information contained herein was derived from sources believed to be correct. Information is believed to be accurate but not guaranteed.

Auction By Order Of: Michael Ditzel, Administrator of the Gerald Serdinak Estate, Summit County Probate case #2024 ES 01083

BRICK RANCH ON 1/2+ ACRE

Springfield Twp.,
Springfield LSD

960 IMPALA DR.,
AKRON, OH 44319



ASHLEY RITCHEY
AUCTIONEER/REALTOR®
330.495.3474
ashley@kikocompany.com



ERIC BEVINGTON
AUCTIONEER/REALTOR®
330.417.5471
eric@kikocompany.com

www.kikoauctions.com | 800.533.5456

Information is believed to be accurate but not guaranteed.
KIKO Auctioneers



Scan for auction details, including directions.

All sells to settle the estate on location.